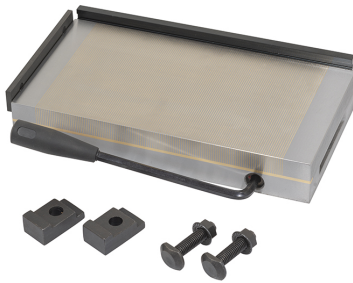


ART. P078/2045
PERMANENT MAGNETIC CHUCK



WITH FIXED POLARITY. IT ALLOWS THE MACHINING OF SMALL AND LOW THICKNESS PIECES DUE TO FINE PITCH.



| | |
|----------------|-----------------------|
| Dimensions | 450 x 200 x 51 mm |
| Magnetic force | 120 N/cm ² |
| Pole pitch | 0,5 + 1,5 mm |
| Net weight | 38 Kg |
| Gross weight | 40,00 kg |
| EAN Code | 8012667386733 |



Wooden Box



Steel

Ташев-Галвинг ООД
www.tashev-galving.com